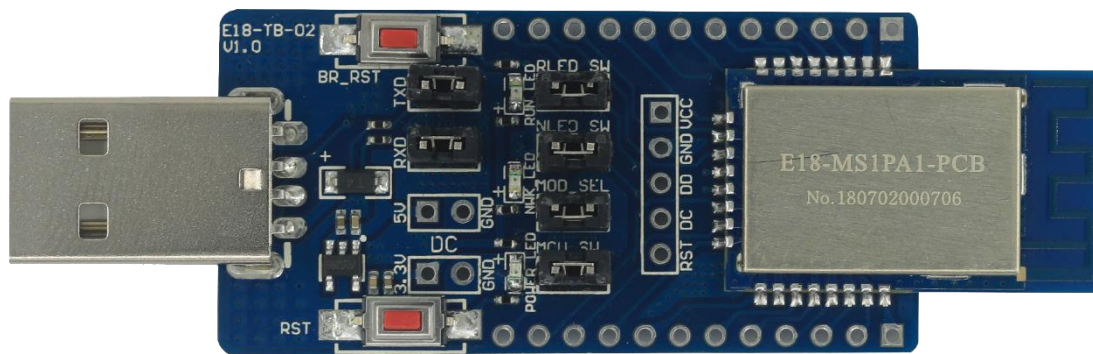




成都亿佰特电子科技有限公司

Chengdu Ebyte Electronic Technology Co.,Ltd.

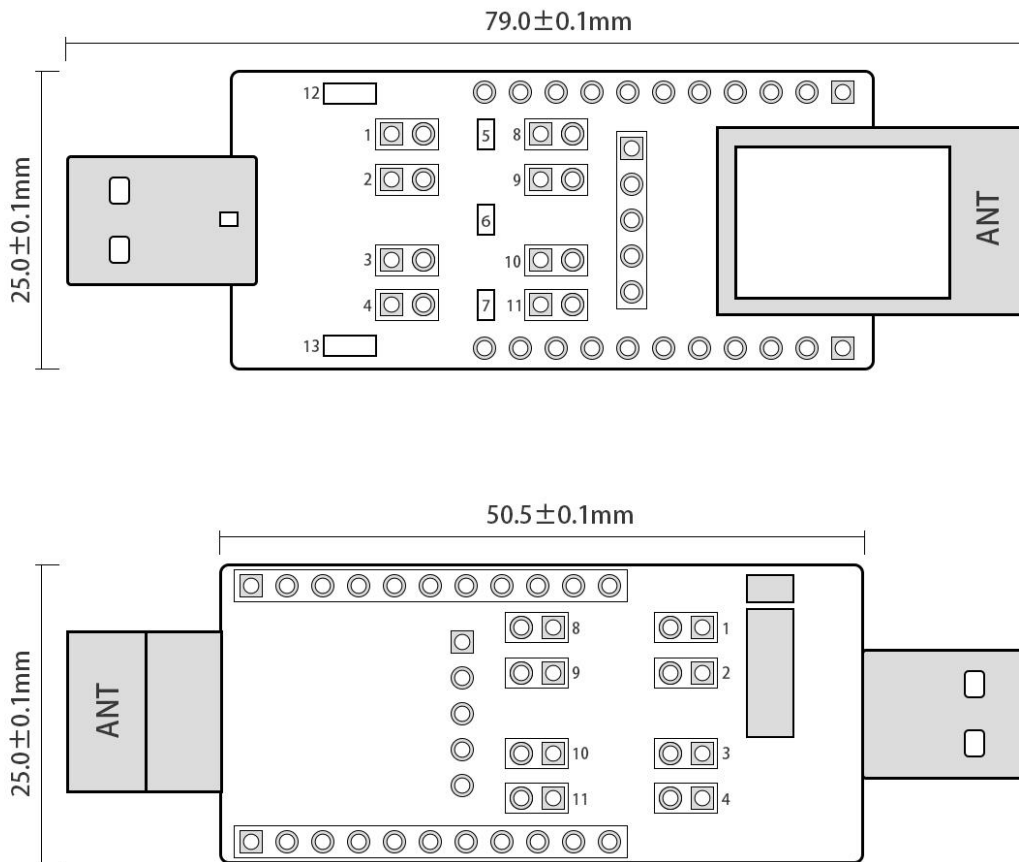
E18-TBH-01 User manual 1.0



1、 Brief introduction

1. Used to test and develop E18 zigbee modules (E18-MS1-PCB, E18-MS1-IPX, E18-MS1PA1-PCB, E18-MS1PA1-IPX).
2. All IO ports of E18 series have been led out.
3. Designed with CH340G UART chip, UART communication development is available.
4. Designed with USB interface, can connect with your PC directly.
5. User can connect the external power supply and UART directly for secondary development.

2、 User guide



Definition:

①	UART TXD selection port (P1.4)	②	UART RXD selection port (P1.5)
③	External 5V power supply port	④	External 3.3V power supply port
⑤	Module running indicator	⑥	Networking indicator
⑦	Power indicator	⑧	RLED selection port (P1.3)
⑨	NLED selection port (P1.2)	⑩	Mode selection port (P1.6)
⑪	SOC selection port (chip VCC)	⑫	Reset button for baud rate
⑬	Reset button		

Function description :

- 1.Reset button is for system reset.
2. Double click baud rate rest button is for baud rate rest (default 115200bps) (P1.7)
- 3.TXD,RXD selection port can used to connect with external UART.
- 4.Mode selection port is used to switch AT command mode and HEX command mode. Plug in jumper means HEX command mode(low level), plug out jumper means AT command mode(high level)(P1.6)
5. Port ①、②、③、④、⑧、⑨、⑩, and ⑪ are used together to test the module current. Without jumper plugged in for port ①、②、③、④、⑧、⑨、⑩ and ⑪, the galvanometer pen contacts ⑪ ports (above: left positive and right negative), can test the chip current.

3、 Driver installation

Please visit our website for downloading CH3410G ([Click here for download](#)) . After the installation is complete, the serial port number can be identified in the device.

4、 Program download

Built-in 8051 MCU, for program download, pls use our CC-DeBugger, UART or other JTAG, ISP, ICP instruments are not available.

The compiled HEX file is available for downloading directly.



5、 Technical assistance

If you have any questions during the development process, pls contact us at support@ebyte.com.

6、Communication test

